

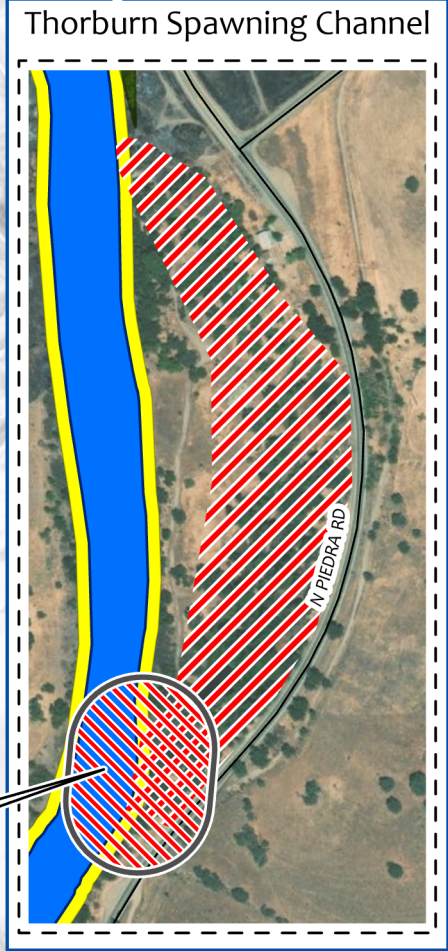
**PUT-AND-TAKE TROUT REACH**  
 Kings River from the USACE Bridge downstream to Cobbles (Alta) Weir is open to fishing all year.  
 Trout bag limit is five (5).  
**Title 14 Section 7.50(b)(70)(E)(1)**



**CATCH-AND-RELEASE TROUT REACH**  
 Kings River from Cobbles (Alta) Weir downstream to the Highway 180 crossing is open to fishing all year.  
 Only artificial lures with barbless hooks may be used.  
 Trout bag limit is zero (0).  
**Title 14 Section 7.50(b)(70)(F)**

**Special No Fishing Zone**  
 The 2,200-foot-long channel located 5 miles downstream from Pine Flat Dam, and the reach of river within a 200-foot radius of the channel exit is closed to all fishing all year.  
**Title 14 Section 7.50(b)(70)(E)(2)**

**Much of the Kings River is bordered by private property.**  
**Do not trespass on private property to access the Kings River.**



- Weir
  - Post Office
  - USACE Bridge
  - Pine Flat Power Plant
  - USACE Office
  - Fire Station
  - Friant Kern Canal
  - Creek
  - County Park
  - Fee Area
- Regulatory Fishing Zones**
- Put-and-Take Area
  - Catch-and-Release Area
  - No Fishing Area