

Fishing Regulations from Pine Flat Dam to Highway 180

RESTRICTED AREA - NO PUBLIC ACCESS

Kings River from Pine Flat Dam downstream to U.S. Army Corps of Engineers (USACE) Bridge on Pine Flat Road is closed to all fishing all year. **[Title 14 Section 7.50(b)(70)(D)].**

TROUT FISHING: PUT & TAKE REACH

Kings River from the U.S. Army Corps of Engineers Bridge on Pine Flat Road downstream to Cobbles (Alta) Weir is open to fishing all year. Trout bag limit is five (5). **[Title 14 Section 7.50(b)(70)(E)(1)].** The Put & Take Reach is shown highlighted in purple on the map.

THORBURN SPAWNING CHANNEL

Kings River Thorburn Spawning Channel, the 2,200-foot-long channel located 5 miles downstream from Pine Flat Dam, and the reach of river within a 200-foot radius of the channel exit is closed to all fishing all year. **[Title 14 Section 7.50(b)(70)(E)(2)].**

TROUT FISHING: CATCH & RELEASE REACH

Kings River, from Cobbles (Alta) Weir downstream to the Highway 180 crossing is open to fishing all year. Only artificial lures with barbless hooks may be used. Trout bag limit is zero (0). **[Title 14 Section 7.50(b)(70)(F)].** The Catch & Release Reach is shown highlighted in orange on the map.



Prickly Sculpin/ Riffle Sculpin
Cottus asper/ Cottus gulosus



California Roach
Lavinia symmetricus



Kern Brook Lamprey
Lampetra hubbsi



Sacramento Sucker
Catostomus occidentalis



Rainbow Trout
Oncorhynchus mykiss



Sacramento Pikeminnow
Ptychocheilus grandis



Three-spine Stickleback
Gasterosteus aculeatus



Map of Kings River Fishing Zones Pine Flat Dam to Highway 180

To report poachers, call:

**1-888-DFG-CALTIP
(1-888-334-2258)**

Or send an anonymous tip to CA Dept. of Fish and Wildlife by texting "CALTIP", followed by a space and the message, to 847411 (tip411).



All trout caught in the Catch & Release Reach must be returned to the river.

Get Involved

To report on your fishing experience on the Kings River, please visit the Kings River Fisheries Management Program's website: www.krfmp.org. Your feedback is extremely valuable to the overall success of the program.

CONTACT US

Kings River Conservation District

- (559) 237-5567
- www.krcd.org

California Department of Fish and Wildlife

- (559) 243-4005
- www.wildlifeca.gov

Kings River Water Association

- (559) 266-0767



Scan the QR Code or visit the link below to view the California Freshwater Sport Fishing Regulations.

<https://apps.wildlife.ca.gov/sportfishingregs/>

Regulaciones de Pesca desde la Presa de Pine Flat hasta de la Autopista 180

ÁREA RESTRINGIDA - NO HAY ACCESO PÚBLICO

El Río Kings desde Presa Pine Flat río abajo hasta U.S. Army Corps (USACE) of Engineers Puente (en el Camino Pine Flat). Cerrado a la pesca todo el año. **[Código de Regulaciones de California Título 14. Sección 7.50(b)(70)(D)].**

PESCA DE TRUCHAS - TRAMO DE PONER Y TOMAR

El Río Kings desde el Puente del U.S. Army Corps of Engineers (en el Camino Pine Flat) hasta el Cobbles (Alta) Weir estación abierta para pescar todo el año. El límite diario de bolsa y posesión es de cinco (5) truchas. **[Código de Regulaciones de California Título 14. Sección 7.50(b)(70)(E)(1)].** El Tramo de Poner y Tomar se muestra resaltado en violeta en el mapa.

CANAL DE DESOVE THORBURN

Río de Kings Thornburn Canal de desove, el canal de 2,200 pies de largo ubicado a 5 millas de la Presa Pine Flat, y de la orilla del río a 200 pies a la redonda de la salida del canal cerrado a la pesca todo el año. **[Código de Regulaciones de California Título 14. Sección 7.50(b)(70)(E)(2)].**

PESCA DE TRUCHAS - TRAMO DE PESCAR Y SOLTAR

El Río Kings desde el Cobbles (Alta) Weir hasta el cruce de la Carretera 180 estación abierta para pescar todo el año. Solo se permiten utensilios de pesca artificiales con anzuelos sin púa. El límite diario de bolsa y posesión es de cero (0) truchas. **[Código de Regulaciones de California Título 14. Sección 7.50(b)(70)(F)].** El Tramo de Captura y Liberación se muestra resaltado en naranja en el mapa.

Para denunciar cazadores furtivos, llame:

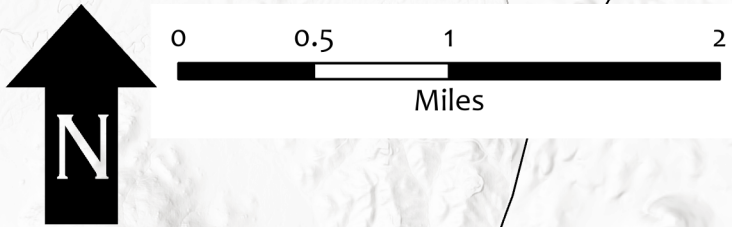
**1-888-DFG-CALTIP
(1-888-334-2258)**

O envíe un aviso anónimo al Depto. de Pesca y Fauna Silvestre de California enviando un mensaje de texto "CALTIP" seguido de un espacio y el mensaje a 847411 (tip411).



Todas las truchas capturadas en el tramo de Captura y Liberación deben devolverse al río.





PUT-AND-TAKE TROUT REACH
 Kings River from the USACE Bridge downstream to Cobbles (Alta) Weir is open to fishing all year.
 Trout bag limit is five (5).
Title 14 Section 7.50(b)(70)(E)(1)

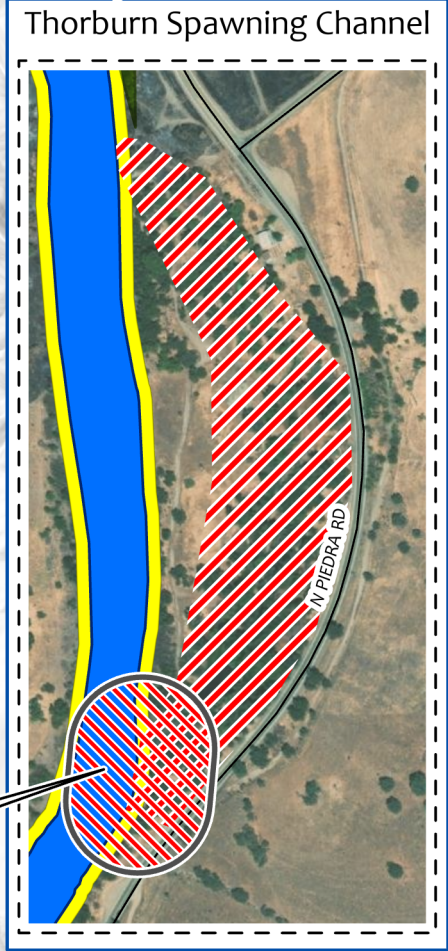


CATCH-AND-RELEASE TROUT REACH
 Kings River from Cobbles (Alta) Weir downstream to the Highway 180 crossing is open to fishing all year.
 Only artificial lures with barbless hooks may be used.
 Trout bag limit is zero (0).
Title 14 Section 7.50(b)(70)(F)

Special No Fishing Zone
 The 2,200-foot-long channel located 5 miles downstream from Pine Flat Dam, and the reach of river within a 200-foot radius of the channel exit is closed to all fishing all year.
Title 14 Section 7.50(b)(70)(E)(2)

Much of the Kings River is bordered by private property.
Do not trespass on private property to access the Kings River.

Kings River from the Highway 180 crossing downstream is open to fishing all year.
 Trout bag limit is five (5).
Title 14 Section 7.50(b)(70)(G)



- Weir
 - Post Office
 - USACE Bridge
 - Pine Flat Power Plant
 - USACE Office
 - Fire Station
 - Friant Kern Canal
 - Creek
 - County Park
 - Fee Area
- Regulatory Fishing Zones
- Put-and-Take Area
 - Catch-and-Release Area
 - No Fishing Area

